

# Bridge Inspection Report

**05817**  
**US 71\_04\_0.30 (NB)**  
**over**  
**RED RIVER**



**Inspection Date:**

**Inspected By:**

**Inspection Type(s):**





Inspector:

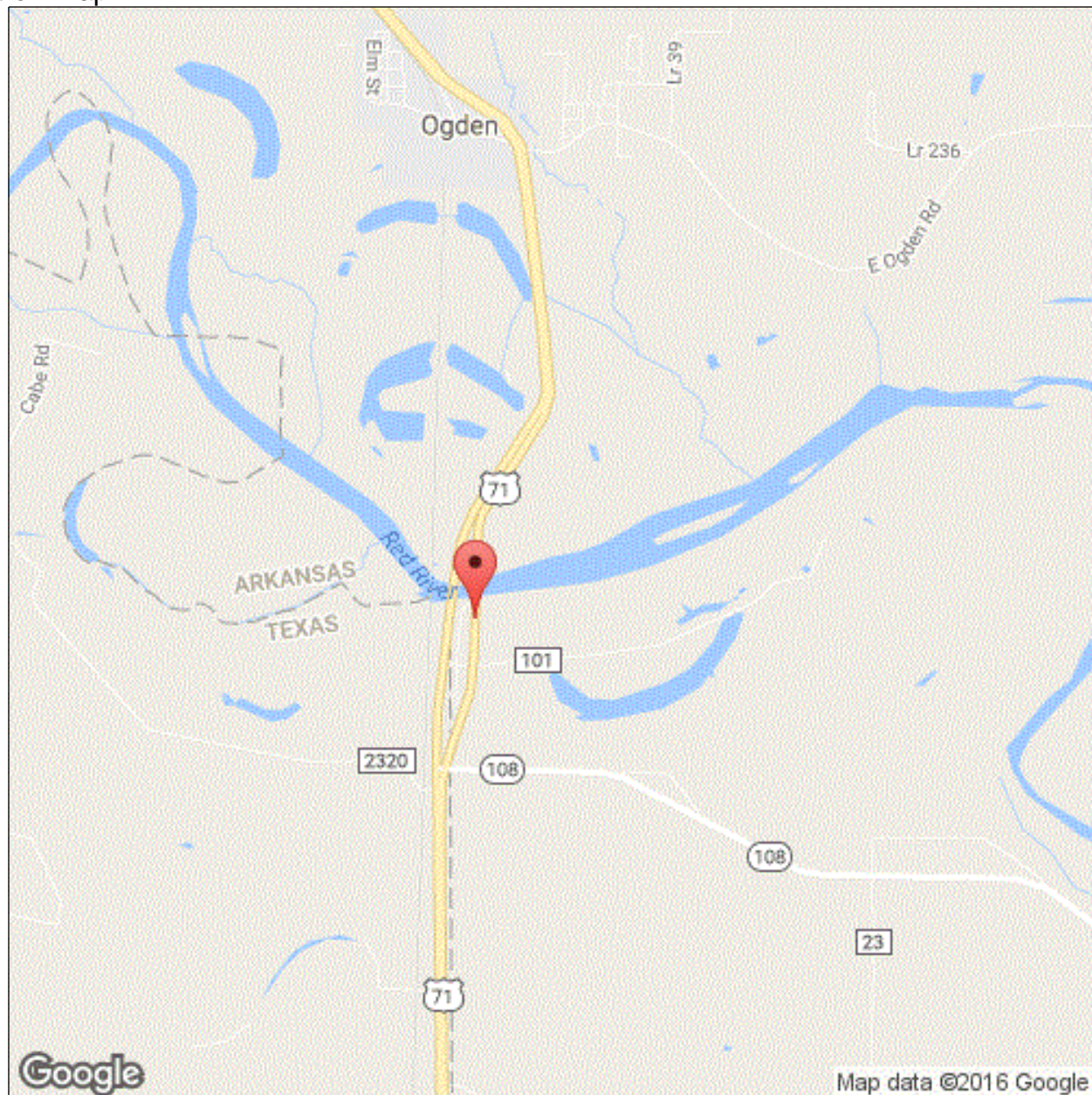
Inspection Date:

Structure Number: 05817

Facility Carried: US 71\_04\_0.30  
(NB)

## Bridge Inspection Report

### Location Map



Latitude: 33.55033

Longitude: -94.04140

Inspector:

Structure Number: 05817

Inspection Date:

Facility Carried: US 71\_04\_0.30  
(NB)

### Bridge Inspection Report

#### Executive Summary

- 1) Routine with snooper, and soundings taken with the boat around the piers and up and down stream
- 2) Little or no change in condition
- 3) AL, CH, SS, MISC, AND DEFICIENCY PHOTOS TAKEN.

NOTE: THIS LOG MILE AND BENTS RUN FROM SOUTH TO NORTH.

Inspector:

Structure Number: 05817

Inspection Date:

Facility Carried: US 71\_04\_0.30  
(NB)

## Bridge Inspection Report

## National Bridge Inventory

IDENTIFICATION		INSPECTIONS	
(1) STATE CODE	056 - Arkansas	(90) INSPECTION DATE	09/27/2016
(8) STRUCTURE NUMBER	05817	(91) DESIGNATED INSPECTION FREQUENCY	24
(5) INV. ROUTE (ON/UNDER)	1 2 1 71 1	(92) CRITICAL FEATURE INSPECTION	(93) CFI DATE
(2) HIGHWAY AGENCY	03	(3) COUNTY CODE	081
(4) PLACE CODE	00000	A. FRACTURE CRITICAL DETAIL	N
(6) FEATURES INTERSECTED	RED RIVER	B. UNDERWATER INSPECTION	N
(7) FACILITY CARRIED	US 71_04_0.30 (NB)	C. OTHER SPECIAL	N
(9) LOCATION	5.56 MI N JCT I-30 & US71	CONDITION	
(11) MILEPOINT	0.300	(58) DECK	6
(12) BASE HIGHWAY NETWORK	1	(59) SUPERSTRUCTURE	7
(13A) LRS INVENTORY ROUTE	0000071040	(60) SUBSTRUCTURE	6
(13B) SUBROUTE NUMBER	00	(61) CHANNEL & CHANNEL PROTECTION	6
(16) LATITUDE	33.55033	(62) CULVERT	N
(17) LONGITUDE	-94.04140	LOAD RATING AND POSTING	
(98A) BORDER BRIDGE CODE	486 - Texas	(31) DESIGN LOAD	5
PERCENT RESPONSIBILITY	50	(63) METHOD USED TO DETERMINE OPERATING RATING	1
(99) BORDER BRIDGE STRUCT	190190061007008	(64) OPERATING RATING	40
STRUCTURE TYPE AND MATERIAL		(65) METHOD USED TO DETERMINE INVENTORY RATING	1
(43) STRUCTURE TYPE, MAIN		(66) INVENTORY RATING	24
A) KIND OF MATERIAL/DESIGN:	4 - Steel continuous	(70) BRIDGE POSTING	5
B) TYPE OF DESIGN/CONSTR:	02 - Stringer/Multi-beam or Girder	(41) STRUCTURE OPEN/POSTED/CLOSED	A
(44) STRUCTURE TYPE, APPROACH SPANS		APPRAISAL	
A) KIND OF MATERIAL/DESIGN:	6 - Prestressed concrete continuous	(67) STRUCTURAL EVALUATION	5
B) TYPE OF DESIGN/CONSTR:	02 - Stringer/Multi-beam or Girder	(68) DECK GEOMETRY	7
(45) NUMBER OF SPANS IN MAIN	4	(69) UNDERCLEARANCES, VERTICAL & HORIZONTAL	N
(46) NUMBER OF APPROACH	12	(71) WATERWAY ADEQUACY	8
(107) DECK STRUCTURE TYPE	1	(72) APPROACH ROADWAY ALIGNMENT	8
(108A) WEARING SURFACE	1	(36) TRAFFIC SAFETY FEATURE	
(108B) DECK MEMBRANE	0	36A) BRIDGE RAILINGS:	1
(108C) DECK PROTECTION	0	36B) TRANSITIONS:	1
AGE OF SERVICE		36C) APPROACH GUARDRAIL:	1
(27) YEAR BUILT	1981	36D) APPROACH GUARDRAIL ENDS:	1
(106) YEAR RECONSTRUCTED	0000	(113) SCOUR CRITICAL BRIDGES	5
(42) TYPE OF SERVICE	ON 1 UNDER 5	SUFFICIENCY RATING	0
(28) LANES	ON 02 UNDER 00	STATUS	84.4
(29) AVERAGE DAILY TRAFFIC	13000	CLASSIFICATION	
(19) BYPASS DETOUR LENGTH	1	(112) NBIS BRIDGE LENGTH	Y
(30) YEAR OF AVERAGE DAILY TRAFFIC	2014	(104) HIGHWAY SYSTEM OF THE INVENTORY ROUTE	1
(109) AVERAGE DAILY TRUCK TRAFFIC	1	(26) FUNCTIONAL CLASSIFICATION OF INVENTORY ROUTE	02
GEOMETRIC DATA		(100) STRAHNET HIGHWAY DESIGNATION	2
(48) LENGTH OF MAX SPAN (ft.)	196	(101) PARALLEL STRUCTURE DESIGNATION	R
(49) STRUCTURE LENGTH (ft.)	1604	(102) DIRECTION OF TRAFFIC	1
(50) CURB/SIDEWALK WIDTHS (ft.)	LEFT 0 RIGHT 0	(103) TEMP STRUCTURE	
(51) BRDG RDWY WIDTH CURB-TO-CURB (ft.)	40.0	(105) FEDERAL LANDS HIGHWAYS	0
(52) DECK WIDTH, OUT-TO-OUT (ft.)	42.8	(110) DESIGNATED NATIONAL NETWORK	1
(32) APPROACH ROADWAY WIDTH (ft.)	40.0	(20) TOLL	3
(33) BRIDGE MEDIAN	0	(21) MAINTENANCE RESPONSIBILITY	01
(34) SKEW (DEG.)	0	(22) OWNER	01
(35) STRUCTURE FLARED	0	(37) HISTORICAL	5
(10) INV RTE, MIN VERT CLEAR (ft.)	99.99	NAVIGATION DATA	
(47) TOTAL HORIZONTAL CLEARANCE (ft.)	41.3	(38) NAVIGATION CONTROL	0
(53) VERTICAL CLEARANCE OVER BRIDGE ROADWAY (ft.)	99.99	(111) PIER OR ABUTMENT PROTECTION	1
(54) VERTICAL UNDER CLEARANCE (ft.)	N 0	(39) NAV VERT CLEARANCE (ft.)	0
(55) LATERAL UNDER CLEARANCE RIGHT (ft.)	N 99.9	(116) MIN NAVIGATION VERT CLEARANCE, VERT LIFT BRIDGE (ft.)	0
(56) MIN LATERAL UNDER CLEARANCE (ft.)	0	(40) NAV HORIZONTAL CLEARANCE (ft.)	0
PROPOSED IMPROVEMENTS			
(75A) TYPE OF WORK PROPOSED	(75B) WORK DONE BY		
(76) LENGTH OF STRUCTURE IMPROVEMENT (ft.)	0		
(94) BRIDGE IMPROVEMENT COST (\$)	0		
(95) ROADWAY IMPROVEMENT COST (\$)	0		
(96) TOTAL PROJECT COST	0		
(97) YEAR OF IMPROVEMENT COST ESTIMATE			
(114) FUTURE ADT	6932		
(115) YEAR OF FUTURE ADT	2028		

Inspector:

Structure Number: 05817

Inspection Date:

Facility Carried: US 71\_04\_0.30  
(NB)

## Bridge Inspection Report

## Element Inspection

## Rollup

	Environment	Total Quantity	Units	Condition State 1	Condition State 2	Condition State 3	Condition State 4
12 - Reinforced Concrete Deck	1- Ben.	68650	sq. ft.	68450	200	0	0
1130 - Cracking (RC and Other)		200		0	200	0	0
107 - Steel Open Girder/Beam	1- Ben.	3460	ft.	3460	0	0	0
515 - Steel Protective Coating		63433	sq. ft.	63433	0	0	0
109 - Prestressed Concrete Open Girder/Beam	1- Ben.	4550	ft.	4530	20	0	0
1110 - Cracking (PSC)		20		0	20	0	0
205 - Reinforced Concrete Column	1- Ben.	30	each	25	5	0	0
1080 - Delamination/Spall/Patched Area		5		0	5	0	0
215 - Reinforced Concrete Abutment	1- Ben.	104	ft.	94	10	0	0
1130 - Cracking (RC and Other)		10		0	10	0	0
234 - Reinforced Concrete Pier Cap	1- Ben.	743	ft.	683	60	0	0
1080 - Delamination/Spall/Patched Area		10		0	10	0	0
1130 - Cracking (RC and Other)		50		0	50	0	0
302 - Compression Joint Seal	1- Ben.	128	ft.	128	0	0	0
303 - Assembly Joint with Seal	1- Ben.	80	ft.	80	0	0	0
310 - Elastomeric Bearing	1- Ben.	95	each	90	5	0	0
1000 - Corrosion		5		0	5	0	0
321 - Reinforced Concrete Approach Slab	1- Ben.	2880	sq. ft.	2830	50	0	0
1130 - Cracking (RC and Other)		50		0	50	0	0
331 - Reinforced Concrete Bridge Railing	1- Ben.	3204	ft.	3204	0	0	0

Inspector:

Inspection Date:

Structure Number: 05817

Facility Carried: US 71\_04\_0.30  
(NB)

Bridge Inspection Report

Element Inspection

Main

	Environment	Total Quantity	Units	Condition State 1	Condition State 2	Condition State 3	Condition State 4
12 - Reinforced Concrete Deck	1- Ben.	29617	sq. ft.	29617			
107 - Steel Open Girder/Beam	1- Ben.	3460	ft.	3460			
515 - Steel Protective Coating		63433	sq. ft.	63433			
205 - Reinforced Concrete Column	1- Ben.	8	each	8			
234 - Reinforced Concrete Pier Cap	1- Ben.	175	ft.	175			
303 - Assembly Joint with Seal	1- Ben.	80	ft.	80			
310 - Elastomeric Bearing	1- Ben.	25	each	25			
331 - Reinforced Concrete Bridge Railing	1- Ben.	1384	ft.	1384			

Inspector:

Structure Number: 05817

Inspection Date:

Facility Carried: US 71\_04\_0.30  
(NB)

## Bridge Inspection Report

## Element Inspection

## APPROACH

	Environment	Total Quantity	Units	Condition State 1	Condition State 2	Condition State 3	Condition State 4
12 - Reinforced Concrete Deck	1- Ben.	39033	sq. ft.	38833	200	0	0
	1130- DECK CRACKS IN ALL SPANS. THOSE THAT ARE SEALED WITH EPOXY NOT NOTED IN CONDITION RATING.						
1130 - Cracking (RC and Other)		200			200		
109 - Prestressed Concrete Open Girder/Beam	1- Ben.	4550	ft.	4530	20	0	0
	1110- CRACKING IN CONCRETE GIRDERS AT ENDS OF GIRDERS VARIOUS LOCATIONS						
1110 - Cracking (PSC)		20			20		
205 - Reinforced Concrete Column	1- Ben.	22	each	17	5	0	0
	1080- SMALL SPALLS FROM BULLET IMPACTS						
1080 - Delamination/Spall/Patched Area		5			5		
215 - Reinforced Concrete Abutment	1- Ben.	104	ft.	94	10	0	0
	1130- MINOR VERITCAL CRACKING IN ABUTMENTS						
1130 - Cracking (RC and Other)		10			10		
234 - Reinforced Concrete Pier Cap	1- Ben.	568	ft.	508	60	0	0
	1080- MINOR SPALLS IN CAPS VARIOUS LOCATIONS 1130- MINOR CRACKS IN CAPS VARIOUS LOCATIONS						
1080 - Delamination/Spall/Patched Area		10			10		
1130 - Cracking (RC and Other)		50			50		
302 - Compression Joint Seal	1- Ben.	128	ft.	128			
310 - Elastomeric Bearing	1- Ben.	70	each	65	5	0	0
	1000- PACK RUST BEGINNING TO FORM BETWEEN STAINLESS PLATE AND SOLE PLATE BENT 15 BEARINGS						
1000 - Corrosion		5			5		
321 - Reinforced Concrete Approach Slab	1- Ben.	2880	sq. ft.	2830	50	0	0
	1130- CRACKING IN APPROACH SLABS BOTH ENDS OF BRIDGE						
1130 - Cracking (RC and Other)		50			50		
331 - Reinforced Concrete Bridge Railing	1- Ben.	1820	ft.	1820			



Inspector:

Inspection Date:

Structure Number: 05817

Facility Carried: US 71\_04\_0.30  
(NB)

### Bridge Inspection Report

#### Maintenance Needs

Date Reported: 10/12/2012 12:00:00 AM

Priority: G - General/ Preventive maintenance

Work Code:

Deficiency Description:

-COLUMNS AND WEBWALLS-  
MINOR SPALLS CAUSED BY BULLET IMPACTS.TYPICAL CONDITION BT 10, 11 AND 14

Work Description:

Date Repairs Completed:

Maintenance Comments:

Stage: Assigned



PHOTO 1 Description BENT 10

Stage: Assigned



PHOTO 2 Description BENT 11

Inspector:

Inspection Date:

Structure Number: 05817

Facility Carried: US 71\_04\_0.30  
(NB)

## Bridge Inspection Report

### Maintenance Needs

Stage: Assigned



PHOTO 3      Description      BENT 14

Inspector:

Inspection Date:

Structure Number: 05817

Facility Carried: US 71\_04\_0.30  
(NB)

### Bridge Inspection Report

#### Maintenance Needs

Date Reported: 10/12/2012 12:00:00 AM

Priority: D - Routine

Work Code:

---

#### Deficiency Description:

CAPS

VERTICAL CRACKS AT ALL CAPS... MINOR SPALLS CAUSED BY BULLET IMPACTS ON CAPS TYPICAL... BT 10 CAP HAS SMALL SPALL AT THE BOTTOM RT END... BT 15, GIRDER 3,4,5, SPALLS DEVELOPING AT BEARING AREA

#### Work Description:

---

Date Repairs Completed:

Maintenance Comments:

---

Stage: Assigned



PHOTO 1      Description      BENT 14 BULLET HOLE SPALLS.  
TYPICAL OF CAPS

Stage: Assigned



PHOTO 2      Description      BENT 15 SPALLS AT BEARING AREA  
BEAM 3,4, AND 5



Inspector:

Inspection Date:

Structure Number: 05817

Facility Carried: US 71\_04\_0.30  
(NB)

### Bridge Inspection Report

#### Maintenance Needs

Date Reported: 10/12/2012 12:00:00 AM

Priority: G - General/ Preventive maintenance

Work Code:

---

Deficiency Description:

2 BOLT MISSING AND 2 BOLTS LOOSE AT BM 2  
2ND CROSS BRACE ,SPAN 9 JUST PAST BT 9

Work Description:

---

Date Repairs Completed:

Maintenance Comments:

---

Stage: Assigned



PHOTO 1      Description      1 missing bolt and 1 loose bolt beam 2  
bay 1 span 9 2nd crossbrace in span 9



Inspector:

Inspection Date:

Structure Number: 05817

Facility Carried: US 71\_04\_0.30  
(NB)

### Bridge Inspection Report

#### Maintenance Needs

Date Reported: 10/12/2012 12:00:00 AM

Priority: D - Routine

Work Code:

#### Deficiency Description:

BEARING DEVICES AT BT 6 , 9, 10, 15 PACK RUST FORMING BETWEEN THE STAINLESS STEEL SLIDE AND THE SOLE PLATE ON THE GIRDER. PADS ARE DEFORMED AT THESE LOCATIONS.

#### Work Description:

Date Repairs Completed:

Maintenance Comments:

Stage: Assigned



PHOTO 1 Description

Stage: Assigned

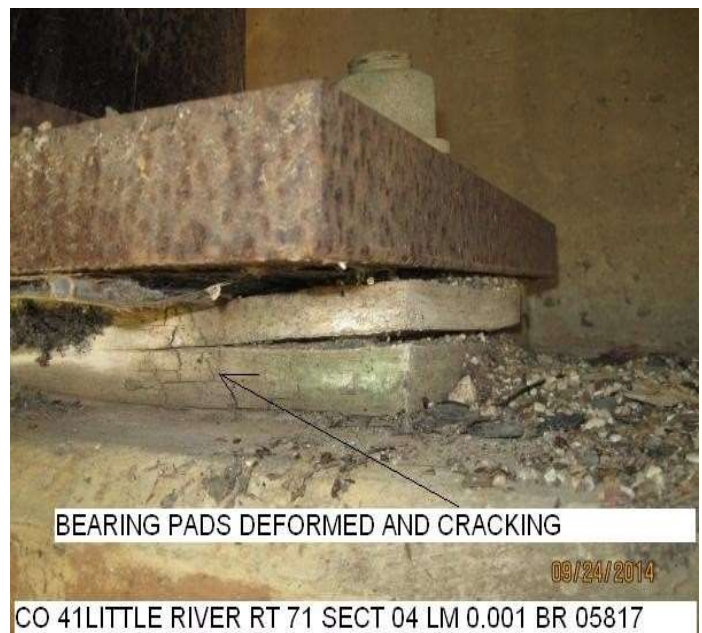


PHOTO 2 Description

Inspector:

Inspection Date:

Structure Number: 05817

Facility Carried: US 71\_04\_0.30  
(NB)

## Bridge Inspection Report

### Maintenance Needs

Stage: Assigned



PHOTO 3 Description

Stage: Assigned

Stage: Assigned



PHOTO 5 Description



PHOTO 4 Description

Inspector:

Inspection Date:

Structure Number: 05817

Facility Carried: US 71\_04\_0.30  
(NB)

### Bridge Inspection Report

#### Maintenance Needs

Date Reported: 10/12/2012 12:00:00 AM

Priority: D - Routine

Work Code:

---

Deficiency Description:

BT 15 SSI JOINT SEAL MATERIAL HAS LOST ADHESION TO THE JOINT ARMOR

Work Description:

---

Date Repairs Completed:

Maintenance Comments:

---

Stage: Assigned



PHOTO 1      Description



Inspector:

Inspection Date:

Structure Number: 05817

Facility Carried: US 71\_04\_0.30  
(NB)

### Bridge Inspection Report

#### Maintenance Needs

Date Reported: 10/12/2012 12:00:00 AM

Priority: D - Routine

Work Code:

Deficiency Description:

SOUTH APPROACH HAS MINOR COLLISION DAMAGE TO APPROACH RAIL LT AND RT SIDE

Work Description:

Date Repairs Completed:

Maintenance Comments:

Stage: Assigned



PHOTO 1 Description

Stage: Assigned



PHOTO 2 Description



Inspector:

Inspection Date:

Structure Number: 05817

Facility Carried: US 71\_04\_0.30  
(NB)

## Bridge Inspection Report

### Maintenance Needs

Stage: Assigned



PHOTO 3 Description

Inspector:

Inspection Date:

Structure Number: 05817

Facility Carried: US 71\_04\_0.30  
(NB)

### Bridge Inspection Report

#### Maintenance Needs

Date Reported: 10/12/2012 12:00:00 AM

Priority: D - Routine

Work Code:

---

#### Deficiency Description:

-R/C GIRDERS-

SPAN 5 BEAM 4...

BT 6 BM 3 END SMALL SPALL TYP ON CONCRETE ENDS...

BT 10 BM 5 RT END GIRDER SMALL SPALL...

BT 15 MINOR SPALL AT END GIRDER AT BEARING AREA...

#### Work Description:

---

Date Repairs Completed:

Maintenance Comments:

---

Stage: Assigned



PHOTO 1      Description      SPAN 5 BEAM 4 SPALL

Stage: Assigned



PHOTO 2      Description

Inspector:

Inspection Date:

Structure Number: 05817

Facility Carried: US 71\_04\_0.30  
(NB)

## Bridge Inspection Report

### Maintenance Needs

Stage: Assigned



PHOTO 3 Description BENT 10 BEAM 5

Stage: Assigned



CO 41 LITTLE RIVER RT 71 SECT 04 LM 0.001 BR 05817

PHOTO 4 Description BENT 6 END OF BEAM



Inspector:

Inspection Date:

Structure Number: 05817

Facility Carried: US 71\_04\_0.30  
(NB)

### Bridge Inspection Report

#### Maintenance Needs

Date Reported: 10/2/2014 12:00:00 AM

Priority: G - General/ Preventive maintenance

Work Code:

---

#### Deficiency Description:

1 BOLT MISSING AT BT 8 1ST SPLICE PLATE SPAN 8  
CLOSE TO BOTTOM OF WEB , NEXT TO BOTTOM FLANGE.

Work Description:

---

Date Repairs Completed:

Maintenance Comments:

---

Stage: Assigned



PHOTO 1 Description

Stage: Assigned



PHOTO 2 Description